



Package Content.

Following the “Make It Simple” philosophy, MIS is proud to be the first to include a sterile single use final drill with every SEVEN implant. This final drill is custom-sized to match the implant, ensuring a safe and precise surgical procedure. A sterile cover screw is also included with every implant.



Cover Screw



Implant



Final Drill



Inside Tube

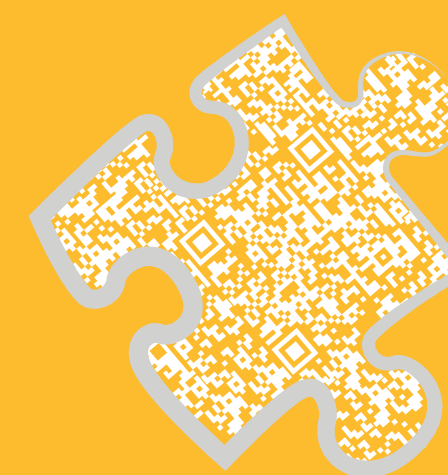


Outside Tube



MIS® | MAKE IT SIMPLE

MIS® | SEVEN®
INTERNAL HEXAGON



Always dedicated to the development of innovative products and technologies, MIS' scientists and engineers conduct continuous laboratory and field studies in collaboration with prestigious universities and dental research institutes. SEVEN is the innovative result of an extensive research and development process, offering a unique combination of surgical and restorative benefits.



Internal hex.

MIS SEVEN implants feature an internal hex. connection, assuring proper implant abutment seating, anti-rotational engagement, resistance to lateral forces, excellent esthetic results and more.



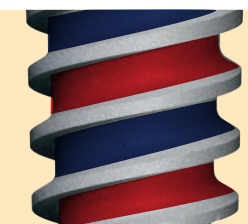
Micro rings

Micro rings on the implant's neck improve BIC (Bone to Implant Contact) at the crestal zone.



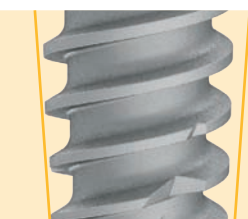
Dual thread

A dual thread design increases BIC (Bone to Implant Contact), reinforcing osseointegration for long lasting clinical success. The overall insertion rate of SEVEN is 2.4mm per revolution.



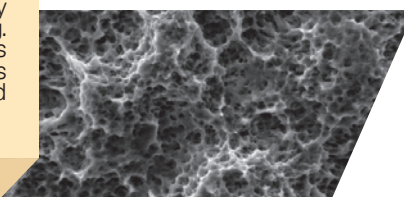
Conical shape

Conical, root-shaped geometry and a unique thread design ensure superior primary stability, offering the ultimate choice for a wide range of clinical cases and loading protocols.



Surface

The surface roughness and micro-morphology is a result of sand blasting and acid etching. MIS' established surface technology has provided millions of patients and clinicians with excellent osseointegration results and long lasting clinical success.



Three spiral channels

Three spiral channels at the apical end of the implant support its self tapping properties. The channels also collect bone chips in the course of insertion, supporting efficient osseointegration and long-term stability.

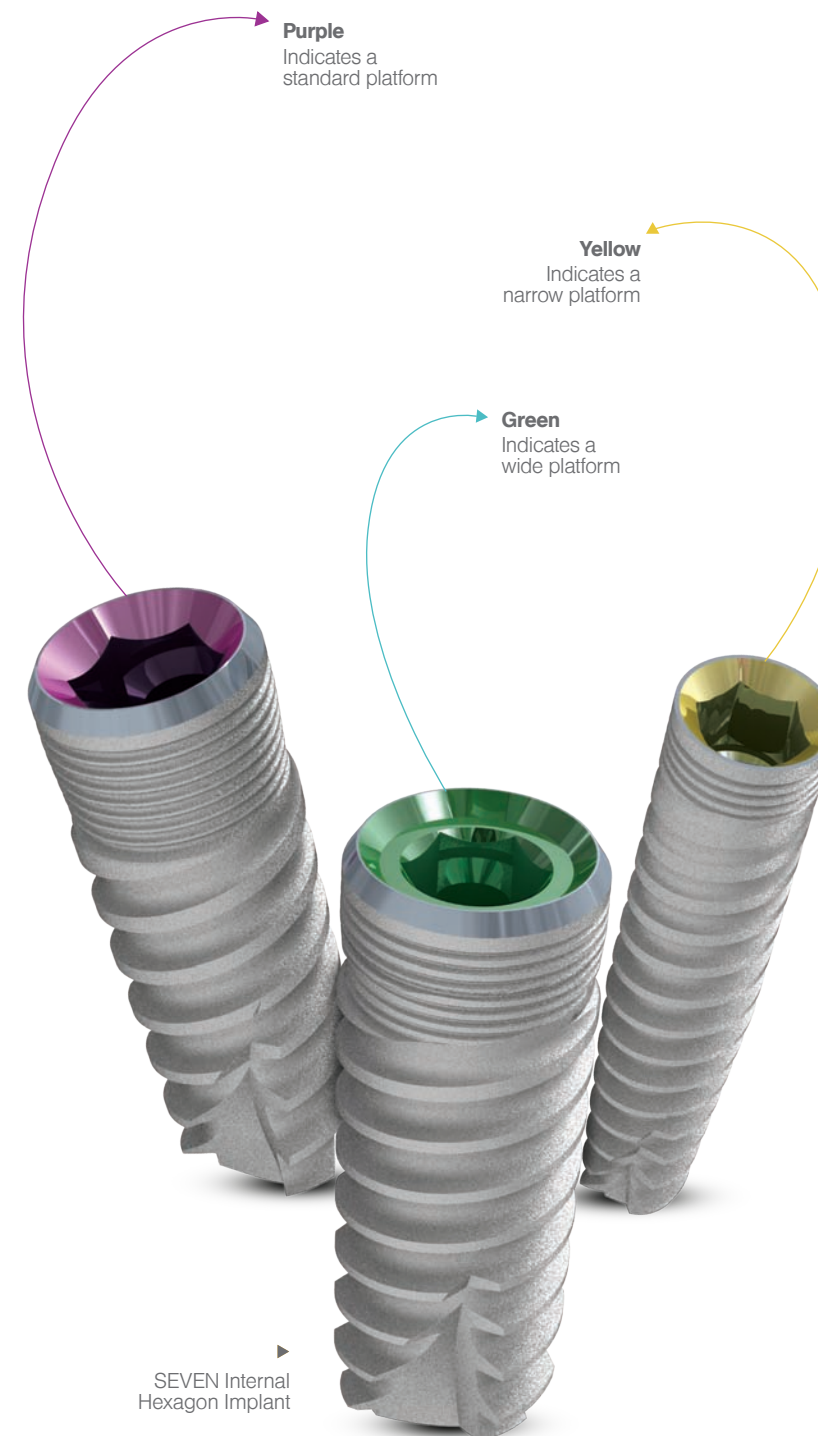


Domed apex

The dome shaped apex prevents over-insertion for safer implant placement procedures.



Characteristics.



Surgical Instruments Kit.

Comprising all required tools for SEVEN implant placement procedures, the new SEVEN innovative surgical kit is designed to enhance simplicity and safety. The kit includes two types of marking drills, a set of length-based pilot drills and color-coded visual cues for all implant diameters and restorative platforms.

